

# 565 Broome SoHo

Residences by  
Renzo Piano Building Workshop

Residence

Penthouse AB South  
Lower Level

Total Interior

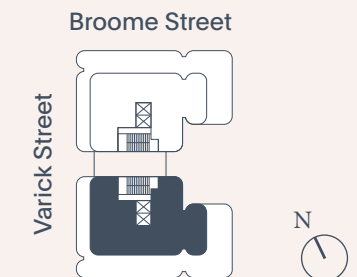
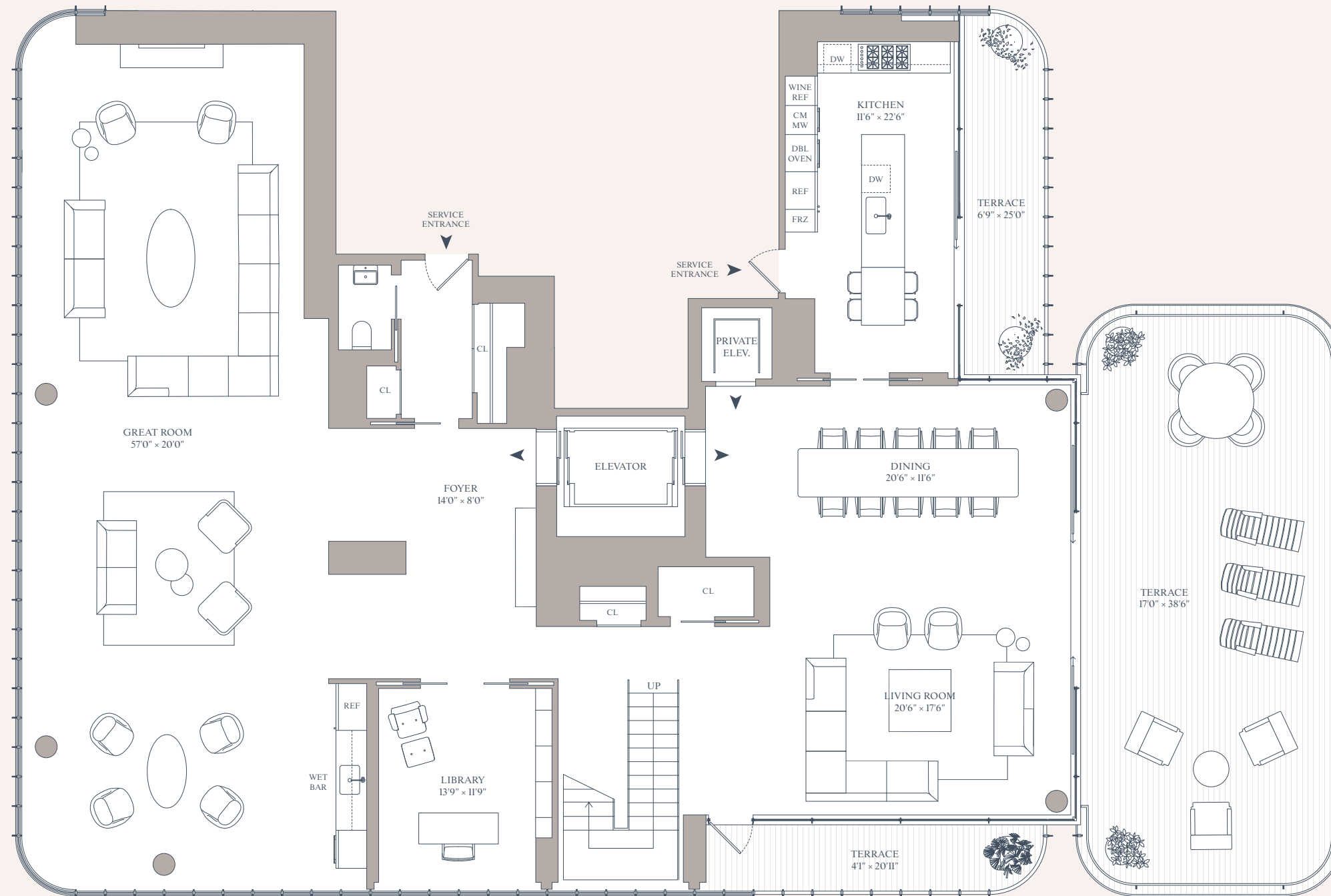
3,625 SF  
336.7 SM

Total Exterior

937 SF  
87 SM

Lower Level Features

Double Height  
Living/Dining Room  
Great Room  
Private Elevator  
3 Terraces  
Library  
Wet Bar  
Powder Room



Bizzi & Partners  
Development



This floor plan depicts a hypothetical layout of a full floor combination and room dimensions that differ from the floor plan for the Residential Unit as currently offered and set forth in Exhibit 7 in Part II of the Offering Plan for 565 Broome Soho Condominium. This floor plan is for information only. Sponsor reserves the right to charge a fee in connection with performance of the work necessary to deliver SPHA and SPHB in the manner depicted on this floor plan and by this advertisement makes no representation in connection therewith. Sponsor reserves the right to make changes in accordance with the terms of the Offering Plan. This is not an offering. The complete terms are in an offering plan available from the sponsor. File No. CD 15-0190. Sponsor: 565 Broome Owner LLC, c/o Bizzi & Partners, 55 E 59th St, New York, NY, 10022. Equal Housing Opportunity.

# 565 Broome SoHo

Residences by  
Renzo Piano Building Workshop

Residence

## Penthouse AB South Upper Level

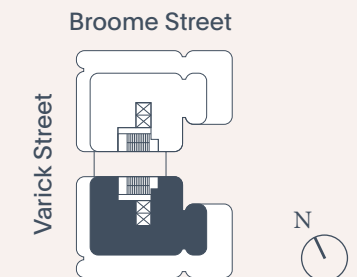
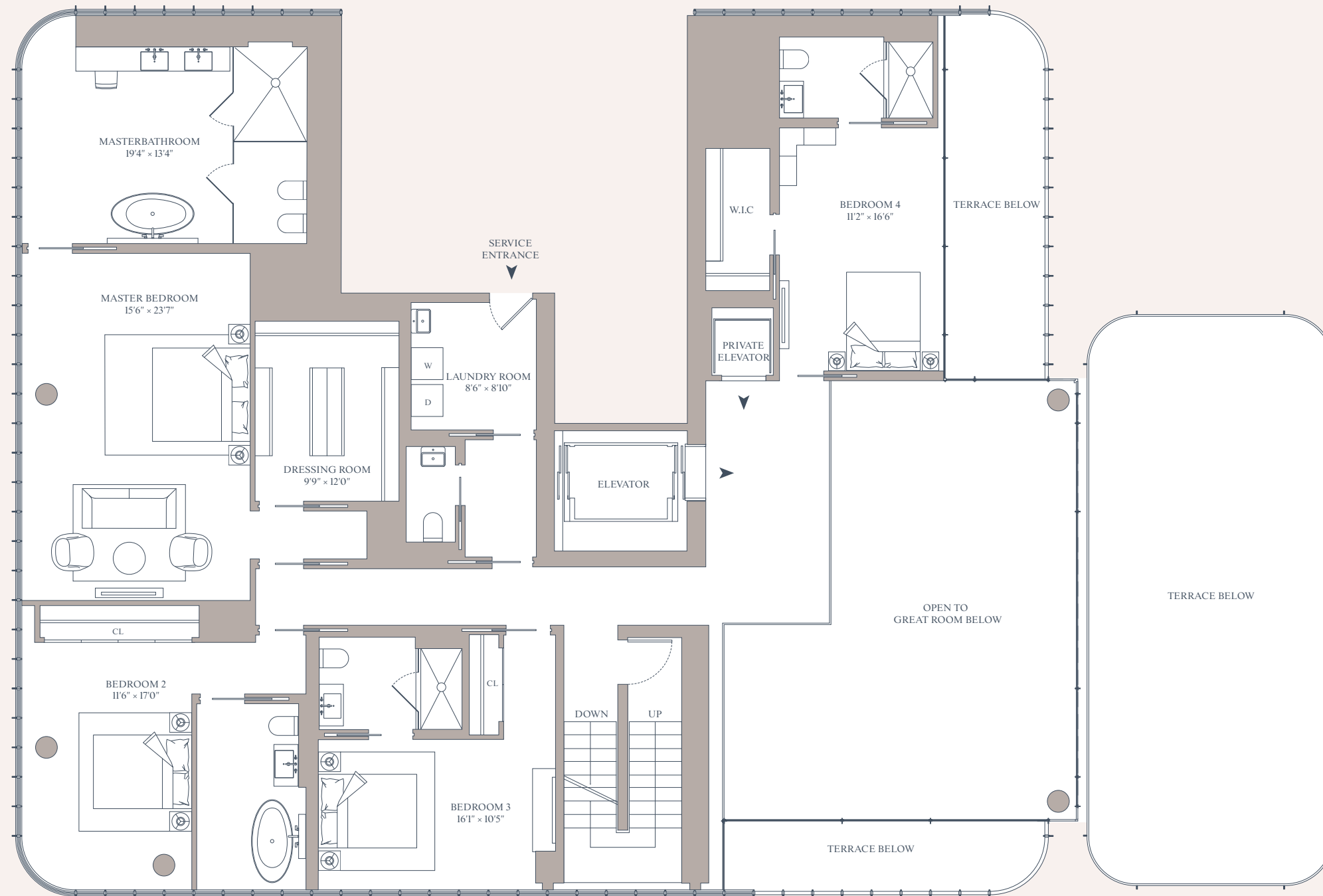
Total Interior

3,030 SF

28I SM

Upper Level Features

- 4 Bedrooms
- 4 Bathrooms
- Powder Room
- Laundry Room
- Private Elevator



Bizzi & Partners  
Development



This floor plan depicts a hypothetical layout of a full floor combination and room dimensions that differ from the floor plan for the Residential Unit as currently offered and set forth in Exhibit 7 in Part II of the Offering Plan for 565 Broome Soho Condominium. This floor plan is for information only. Sponsor reserves the right to charge a fee in connection with performance of the work necessary to deliver SPHA and SPHB in the manner depicted on this floor plan and by this advertisement makes no representation in connection therewith. Sponsor reserves the right to make changes in accordance with the terms of the Offering Plan. This is not an offering. The complete terms are in an offering plan available from the sponsor. File No. CD 15-0190. Sponsor: 565 Broome Owner LLC, c/o Bizzi & Partners, 55 E 59th St, New York, NY, 10022. Equal Housing Opportunity.

# 565 Broome SoHo

Residences by  
Renzo Piano Building Workshop

Residence

## Penthouse AB South Roof Deck

Total Exterior

2,500 SF

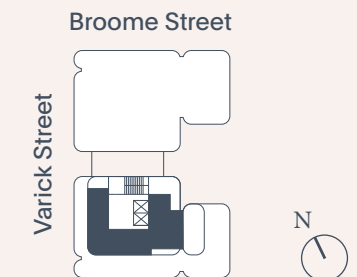
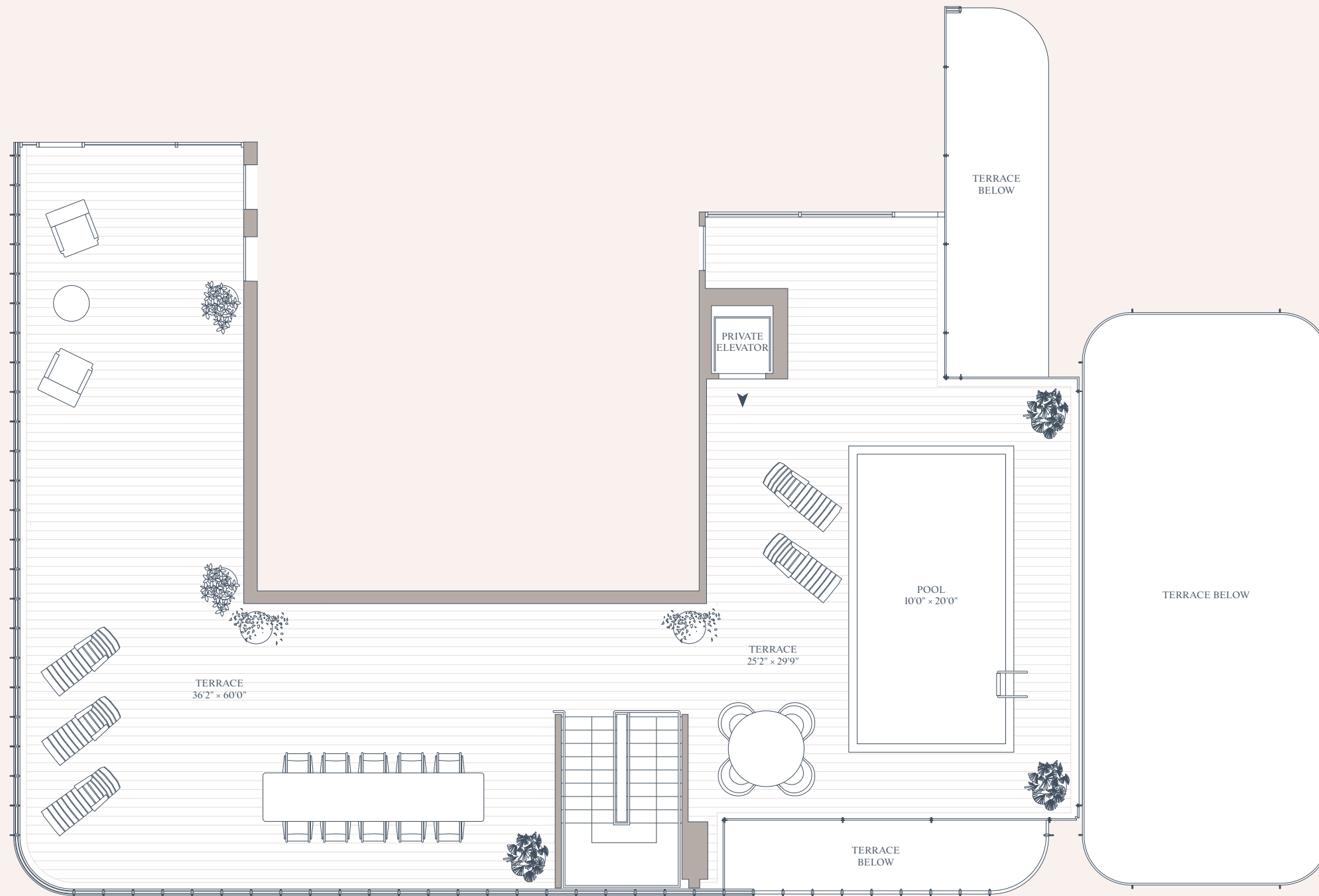
232 SM

Roof Deck Features

Private Roof Deck

Pool

Private Elevator



Bizzi & Partners  
Development

Douglas Elliman  
DEVELOPMENT MARKETING

This floor plan depicts a hypothetical layout of a full floor combination and room dimensions that differ from the floor plan for the Residential Unit as currently offered and set forth in Exhibit 7 in Part II of the Offering Plan for 565 Broome Soho Condominium. This floor plan is for information only. Sponsor reserves the right to charge a fee in connection with performance of the work necessary to deliver SPHA and SPHB in the manner depicted on this floor plan and by this advertisement makes no representation in connection therewith. Sponsor reserves the right to make changes in accordance with the terms of the Offering Plan. This is not an offering. The complete terms are in an offering plan available from the sponsor. File No. CD 15-0190. Sponsor: 565 Broome Owner LLC, c/o Bizzi & Partners, 55 E 59th St, New York, NY, 10022. Equal Housing Opportunity.